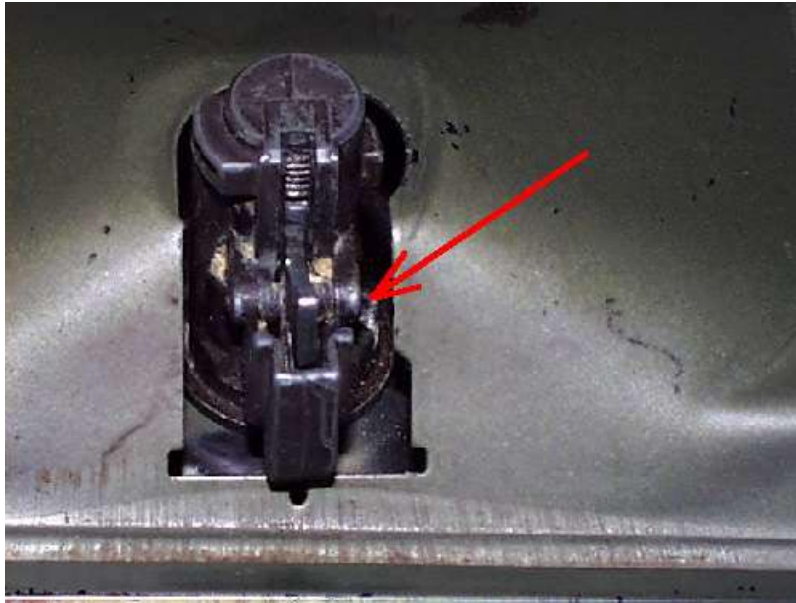
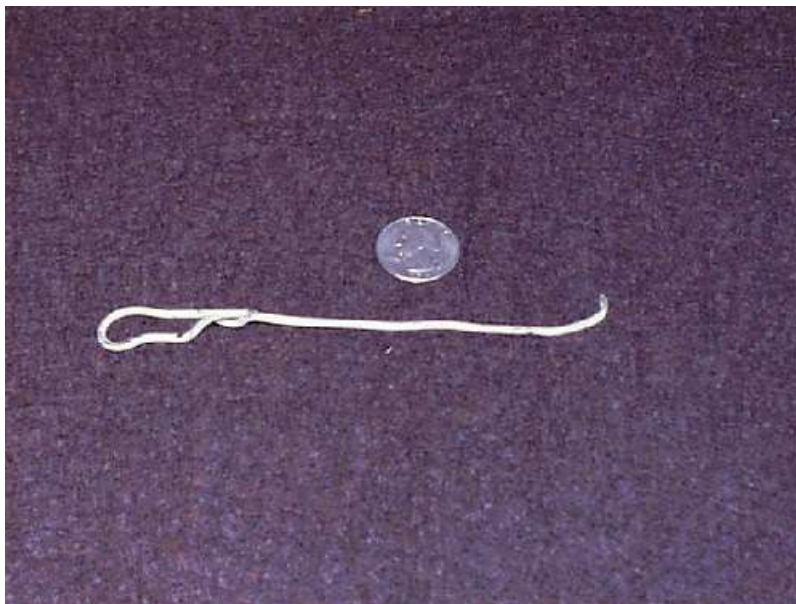


Glove Box Lock Removal

1) Open Glove Box. Locate the opening on the side of the lock:



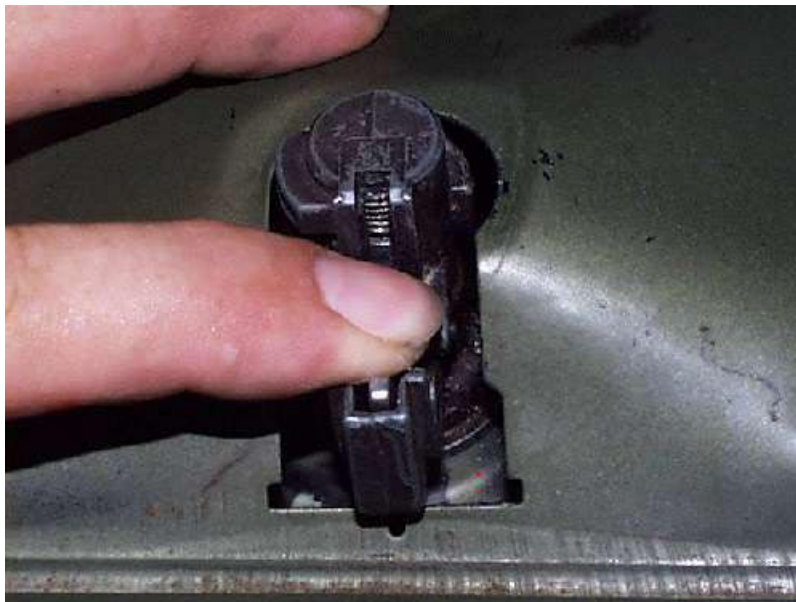
2) I made a tool out of a hanger to use:



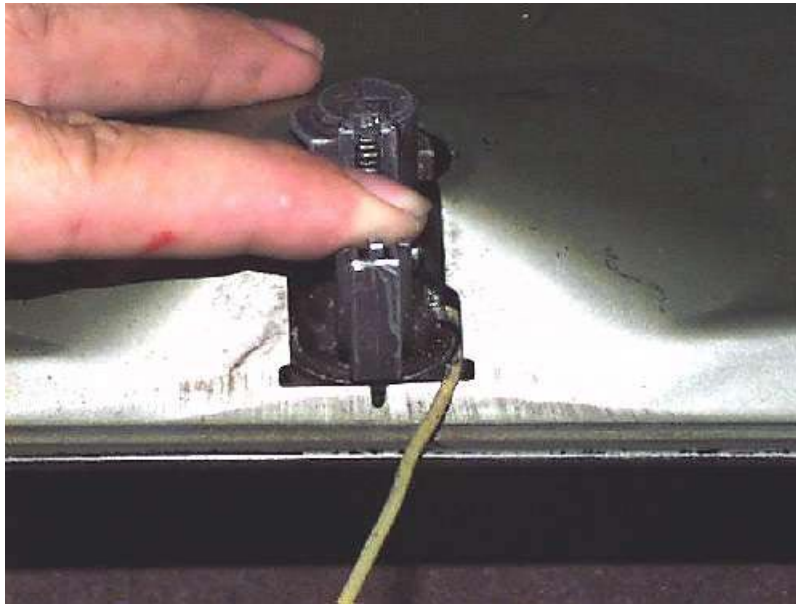
3) The tool will be placed into hole as shown:



4a) Push the latch toward the door, and....



4b) ...wiggle the tool end into the lock....



5) The lock cylinder should start to pop out a little. Keep the latch pressed.



6) Keep wiggling the tool, and the cylinder should come the rest of the way out. What you are trying to accomplish is to depress each tumbler (not sure if thats the right terminology), so that the cylinder can come out past that point:



7) When it's all apart, you should have these parts:



8: Note- To me it looks like that if you can lock it with a key, you have clearer access to the tumblers through an access hole at the top of the lock. I think these instructions would apply to that method as well. The pic below shows the access hole.

